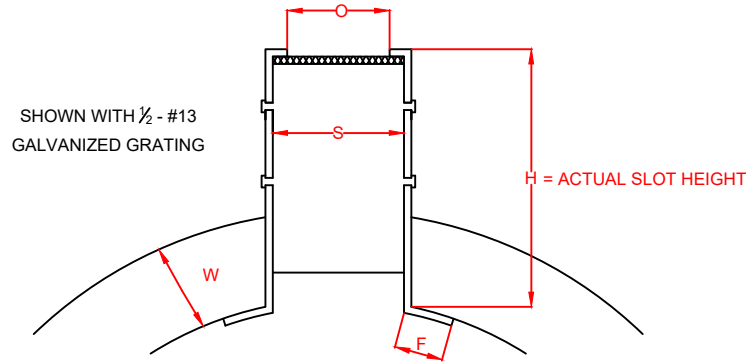
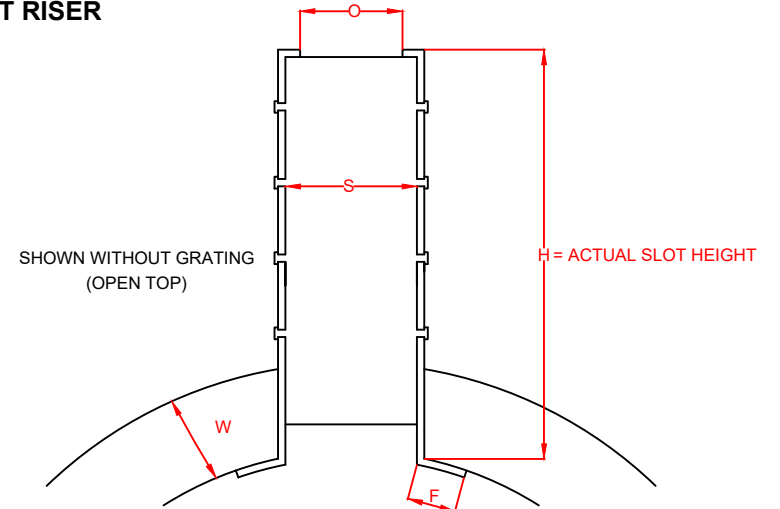


DURASLOT® STANDARD HEIGHT SLOT RISER 4" - 36" DIAMETER



PIPE DIAM.	H	W	F	O	S	PRODUCT # (GRATED)	PRODUCT # (OPEN TOP)
4" (100mm)	2.75" (70mm)	0.34" (9mm)	0.5" (13mm)	1.25" (32mm)	1.75" (44mm)	0420DS	0420DSOT
6" (150mm)	3.0" (76mm)	0.5" (13mm)	0.75" (19mm)	1.75" (44mm)	2.25" (57mm)	0620DS	0620DSOT
8" (200mm)	3.0" (76mm)	0.625" (16mm)	0.75" (19mm)	1.75" (44mm)	2.25" (57mm)	0820DS	0820DSOT
10" (250mm)	3.0" (76mm)	0.75" (19mm)	0.75" (19mm)	1.75" (44mm)	2.25" (57mm)	1020DS	1020DSOT
12" (300mm)	3.5" (89mm)	1.125" (29mm)	0.75" (19mm)	1.75" (44mm)	2.25" (57mm)	1220DS	1220DSOT



PIPE DIAM.	H	W	F	O	S	PRODUCT # (GRATED)	PRODUCT # (OPEN TOP)
4" (100mm)	6.25"	0.34"	0.5"	1.25"	1.75"	0460DS	0460DSOT
6" (150mm)	6.5" (165mm)	0.5" (13mm)	0.75" (19mm)	1.75" (44mm)	2.25" (57mm)	0660DS	0660DSOT
8" (200mm)	6.5" (165mm)	0.625" (16mm)	0.75" (19mm)	1.75" (44mm)	2.25" (57mm)	0860DS	0860DSOT
10" (250mm)	6.5" (165mm)	0.75" (19mm)	0.75" (19mm)	1.75" (44mm)	2.25" (57mm)	1060DS	1060DSOT
12" (300mm)	7.0" (178mm)	1.125" (29mm)	0.75" (19mm)	1.75" (44mm)	2.25" (57mm)	1260DS	1260DSOT
15" (375mm)	7.0" (178mm)	1.25" (32mm)	0.75" (19mm)	1.75" (44mm)	2.25" (57mm)	1560DS	1560DSOT
18" (450mm)	7.0" (178mm)	1.5" (38mm)	0.75" (19mm)	1.75" (44mm)	2.25" (57mm)	1860DS	1860DSOT
24" (600mm)	7.25" (184mm)	1.875" (48mm)	1.0" (25mm)	1.75" (44mm)	2.25" (57mm)	2460DS	2460DSOT
30" (750mm)	8.25" (210mm)	2.55" (65mm)	1" (25mm)	1.75" (45mm)	2.25" (57mm)	3060DS	3060DSOT
36" (900mm)	8.25" (210mm)	2.85" (72mm)	1" (25mm)	1.75" (45mm)	2.25" (57mm)	3660DS	3660DSOT

NOTES:

DIMENSION FROM GRADE TO PIPE INVERT:

H (ACTUAL SLOT HEIGHT) + PIPE DIAMETER + RECESS (¼"-½")

© 2019 ADS, INC.

ADVANCED DRAINAGE SYSTEMS, INC. ("ADS") HAS PREPARED THIS DETAIL BASED ON INFORMATION PROVIDED TO ADS. THIS DRAWING IS INTENDED TO DEPICT THE COMPONENTS AS REQUESTED. ADS HAS NOT PERFORMED ANY ENGINEERING OR DESIGN SERVICES FOR THIS PROJECT. NOR HAS ADS INDEPENDENTLY VERIFIED THE INFORMATION SUPPLIED. THE INSTALLATION DETAILS PROVIDED HEREIN ARE GENERAL RECOMMENDATIONS AND ARE NOT SPECIFIC FOR THIS PROJECT. THE DESIGN ENGINEER SHALL REVIEW THESE DETAILS PRIOR TO CONSTRUCTION. IT IS THE DESIGN ENGINEERS RESPONSIBILITY TO ENSURE THE DETAILS PROVIDED HEREIN MEETS OR EXCEEDS THE APPLICABLE NATIONAL, STATE, OR LOCAL REQUIREMENTS AND TO ENSURE THAT THE DETAILS PROVIDED HEREIN ARE ACCEPTABLE FOR THIS PROJECT.

REV.	DESCRIPTION	BY	MM/DD/YY	CHK'D

DRAWING NUMBER: STD-1401



4640 TRUEMAN BLVD
HILLIARD, OHIO 43026

ADVANCED DRAINAGE SYSTEMS, INC.

DATE:	CWS
DATE:	2/1/2019
DESIGNER:	KAK
SCALE:	NTS
SHEET:	1 OF 1