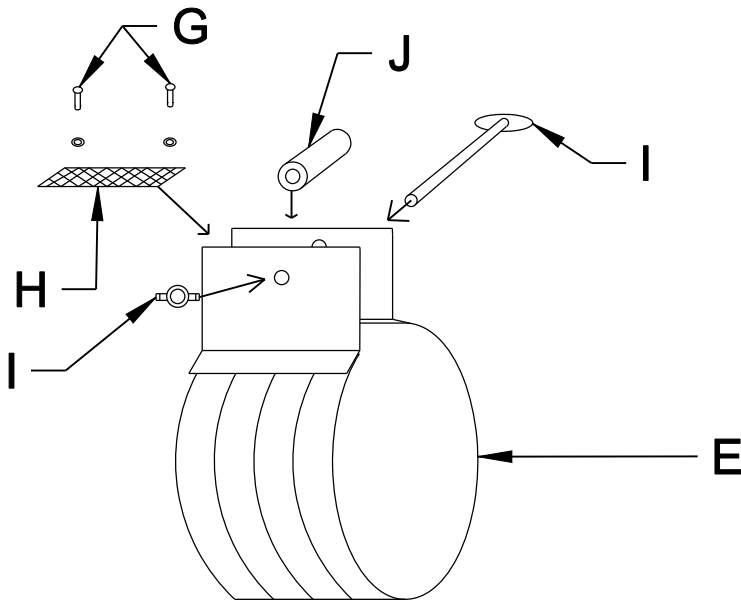


- A. DURASLOT End Cap
- B. DURASLOT Pipe
- C. DURASLOT Adapter
- D. ADS N-12 Pipe/ Hancor HiQ
- E. DURASLOT Coupler Band

- F. DURASLOT Grate Anchor
- G. 1/4" SPHS x 1" Long w/ Washer
- H. DURASLOT Grate Connector
- I. 5/16" Thumbscrew x 3 1/2" Long w/ 5/16" Wingnut
- J. Plastic Sleeve Spacer (Goes on I.)



Each Cap A, Adapter C comes with an Anchor F  
 Each Coupler Band E comes with Hardware G,H,I,J

Title <b>DURASLOT® Surface Drains Slot W/ Grate Assembly Example</b> 6" - 10" DIA. (All Slot Heights) 12" DIA. (W/ 2 1/2" Slot Height)		
<b>Duraslot Inc.</b> PO Box 1392 South Glens Falls, NY 12803 T: +1.518.747.7047 F: +1.518.747.6357	Dwg# <b>ASG-03</b>	Date <b>06.18.2013</b>
	Scale	