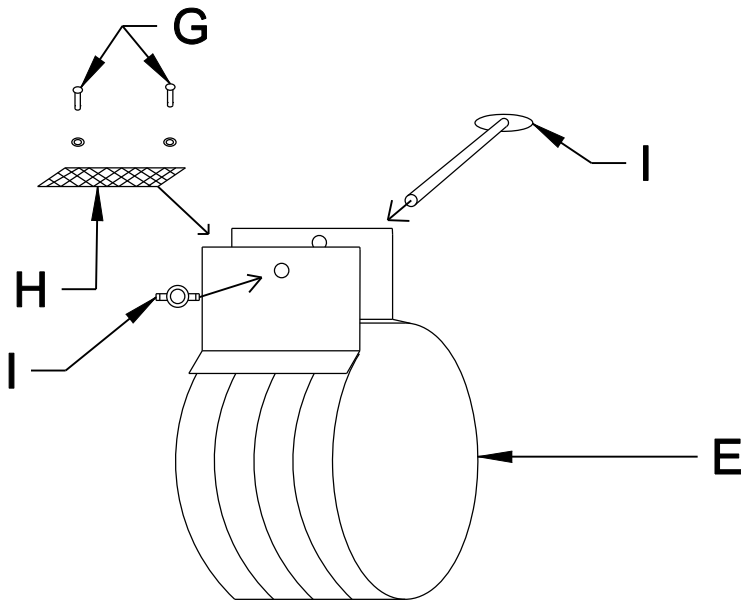


- A. DURASLOT End Cap
- B. DURASLOT Pipe
- C. DURASLOT Adapter
- D. ADS N-12 Pipe/ Hancor HiQ
- E. DURASLOT Coupler Band

- F. DURASLOT Grate Anchor
- G. (4)  $\frac{1}{4}$ " SPHS x 1" Long w/ Washers
- H. DURASLOT Grate Connector
- I.  $\frac{5}{16}$ " Thumbscrew x  $3\frac{1}{2}$ " Long w/  $\frac{5}{16}$ " Wingnut



Each Cap A, Adapter C comes with an Anchor F  
 Each Coupler Band E comes with Hardware G,H,I

Title		
DURASLOT® Surface Drains 4" Diameter Slot w/ Grate Assembly Example		
<b>Duraslot Inc.</b> <small>PO Box 1392 South Glens Falls, NY 12803 T: +1.518.747.7047 F: +1.518.747.6357</small>	Dwg#	Date
	ASG-02	06.18.2013
		Scale